

# THE UNIVERSITY OF CHICAGO

HANNA H. GRAY, *President.*

KENNETH W. DAM, *Provost.*

WILLIAM B. CANNON, *Vice-President for Business and Finance.*

ROBERT B. URETZ, *Vice-President for the Medical Center.*

JONATHAN F. FANTON, *Vice-President for Planning.*

ARTHUR M. SUSSMAN, *General Counsel and Vice-President.*

CHARLES D. O'CONNELL, *Vice-President and Dean of Students.*

JONATHAN KLEINBARD, *Vice-President for University News and Community Affairs.*

ALEXANDER E. SHARP, *Vice-President for Financial Affairs.*

WILLIAM R. HADEN, *Vice-President for Development.*

MARY PETRIE, *Treasurer.*

F. GREGORY CAMPBELL, *Secretary of the Board.*

MARTIN D. RUNKLE, *Director of the Library.*

MAXINE SULLIVAN, *Registrar.*

## THE LAW SCHOOL

### OFFICERS OF ADMINISTRATION

GERHARD CASPER, *Dean.*

RICHARD I. BADGER, *Assistant Dean and Dean of Students in the Law School.*

HOLLY C. DAVIS, *Assistant Dean for Alumni Relations and Development.*

ROBERTA G. EVANS, *Assistant to the Dean.*

HERBERT B. FRIED, *Director of Placement.*

GLADYS O. FULLER, *Administrative Assistant.*

FRANK J. MOLEK, *Assistant Dean and Director of Capital Campaign.*

JUDITH M. WRIGHT, *Law Librarian.*

### OFFICERS OF INSTRUCTION

RONALD H. COASE, B.COM., D.SC.(ECON.), *Clifton R. Musser Professor Emeritus of Economics.*

KENNETH CULP DAVIS, A.B., LL.B., LL.D., *John P. Wilson Professor Emeritus of Law.*

AARON DIRECTOR, PH.B., *Professor Emeritus of Economics.*

ALLISON DUNHAM, A.B., LL.B., *Arnold I. Shure Professor Emeritus of Urban Law.*

STANLEY A. KAPLAN, PH.B., J.D., LL.M., *Professor Emeritus of Law.*

LEON M. LIDDELL, A.B., J.D., L.S.B., *Law Librarian and Professor of Law, Emeritus.*

- SHELDON TEFFT, LL.B., B.C.L., M.A. (OXON.), *James Parker Hall Professor Emeritus of Law.*
- HANS ZEISEL, DR.JUR., DR.POL.SCI., *Professor Emeritus of Law and Sociology.*
- DOUGLAS G. BAIRD, A.B., J.D., *Assistant Professor of Law.*
- WALTER J. BLUM, A.B., J.D., *Wilson-Dickinson Professor of Law and Committee on Public Policy Studies.*
- R. LEA BRILMAYER, A.B., J.D., LL.M., *Professor of Law.* (On leave of absence.)
- DENNIS W. CARLTON, A.B., S.M., PH.D., *Professor of Economics.*
- GERHARD CASPER, LL.M., DR.IUR.UTR., *William B. Graham Professor of Law and Dean.*
- DAVID P. CURRIE, A.B., LL.B., *Harry N. Wyatt Professor of Law.*
- KENNETH W. DAM, S.B., J.D., *Harold J. and Marion F. Green Professor in International Legal Studies and Provost.*
- LINDA VAN WINKLE DEACON, A.B., J.D., *Visiting Associate Professor of Law.* (Spring Quarter.)
- FRANK H. EASTERBROOK, A.B., J.D., *Professor of Law.*
- RICHARD A. EPSTEIN, A.B., B.A., LL.B., *Professor of Law.*
- GIDON A. G. GOTTLIEB, LL.B., LL.B., LL.M., S.J.D., *Leo Spitz Professor of International Law and Diplomacy.*
- RICHARD H. HELMHOLZ, A.B., LL.B., A.M., PH.D., *Visiting Professor of Law.*
- JOSEPH ISENBERGH, A.B., A.M., J.D., *Assistant Professor of Law.*
- GARETH H. JONES, M.A., LL.D., LL.M., PH.D., *Visiting Professor of Law and Charles J. Merriam Scholar.* (Spring Quarter.)
- SPENCER L. KIMBALL, S.B., B.C.L., S.J.D., *Seymour Logan Professor of Law.* (On leave of absence.)
- EDMUND W. KITCH, A.B., J.D., *Professor of Law and Director of the Law and Economics Program.*
- PHILIP B. KURLAND, A.B., LL.B., *Professor of Law and William R. Kenan, Jr., Distinguished Service Professor in the College.*
- WILLIAM M. LANDES, A.B., PH.D., *Clifton R. Musser Professor of Economics.*
- JOHN H. LANGBEIN, A.B., LL.B., LL.B., PH.D., *Max Pam Professor of American and Foreign Law.*
- EDWARD H. LEVI, PH.B., J.D., J.S.D., LL.D., *Glen A. Lloyd Distinguished Service Professor and President Emeritus.*
- JO DESHA LUCAS, A.B., M.P.A., LL.B., LL.M., *Professor of Law.*
- BERNARD D. MELTZER, A.B., J.D., LL.M., *Distinguished Service Professor of Law.*
- NORVAL MORRIS, LL.B., LL.M., PH.D., *Julius Kreeger Professor of Law and Criminology.*
- PHIL C. NEAL, A.B., LL.B., *Harry A. Bigelow Professor of Law.*
- GARY H. PALM, A.B., J.D., *Associate Professor of Law.*
- RICHARD A. POSNER, A.B., LL.B., *Lee and Brena Freeman Professor of Law.*
- ANTONIN SCALIA, A.B., LL.B., *Professor of Law.*
- A. W. B. SIMPSON, M.A., D.C.L., *Visiting Professor of Law.* (Spring Quarter.)
- ADOLF SPRUDZS, LIC., A.M., *Foreign Law Librarian and Lecturer in Legal Bibliography.*

GEOFFREY R. STONE, S.B., J.D., *Professor of Law.*  
CASS R. SUNSTEIN, A.B., J.D., *Assistant Professor of Law.*  
JAMES B. WHITE, A.B., A.M., LL.B., *Professor of Law and Professor in  
the College and the Committee on the Ancient Mediterranean World.*  
DIANE P. WOOD, A.B., J.D., *Assistant Professor of Law.*  
JUDITH M. WRIGHT, S.B., A.M., J.D., *Law Librarian and Lecturer in Law.*  
FRANKLIN E. ZIMRING, A.B., J.D., *Professor of Law and Director of the  
Center for Studies in Criminal Justice.*

KENNETH F. BERG, A.B., J.D., *Bigelow Teaching Fellow and Lecturer in  
Law.*  
MONTE DUBE, A.B., J.D., *Bigelow Teaching Fellow and Lecturer in Law.*  
KENNETH W. ELLISON, A.B., J.D., *Bigelow Teaching Fellow and Lecturer  
in Law.*  
STANTON D. KRAUSS, A.B., J.D., *Bigelow Teaching Fellow and Lecturer  
in Law.*  
KATHLEEN A. KUNDE, A.B., J.D., *Bigelow Teaching Fellow and Lecturer  
in Law.*  
ELLEN M. LIEBMAN, A.B., J.D., *Bigelow Teaching Fellow and Lecturer in  
Law.*

GLEN E. HESS, A.B., LL.B., *Lecturer in Law.*  
WILLIAM R. JENTES, A.B., J.D., *Lecturer in Law.*  
HOWARD G. KRANE, A.B., J.D., *Lecturer in Law.*  
EUGENE H. WACHTEL, A.B., J.D., *Lecturer in Law.*

#### MANDEL LEGAL AID CLINIC

GARY H. PALM, *Director.*

MARK J. HEYRMAN, A.B., J.D., *Clinical Fellow and Lecturer in Law.*  
STEFAN H. KRIEGER, A.B., J.D., *Staff Attorney and Clinical Fellow.*  
RANDALL D. SCHMIDT, A.B., J.D., *Staff Attorney and Clinical Fellow.*  
MARK C. WEBER, A.B., J.D., *Staff Attorney and Clinical Fellow.*

CHARLOTTE K. SCHUERMAN, A.B., A.M., *Social Worker and Field Super-  
visor.*

#### FACULTY FROM OTHER SCHOOLS

##### AND THE DIVISIONS

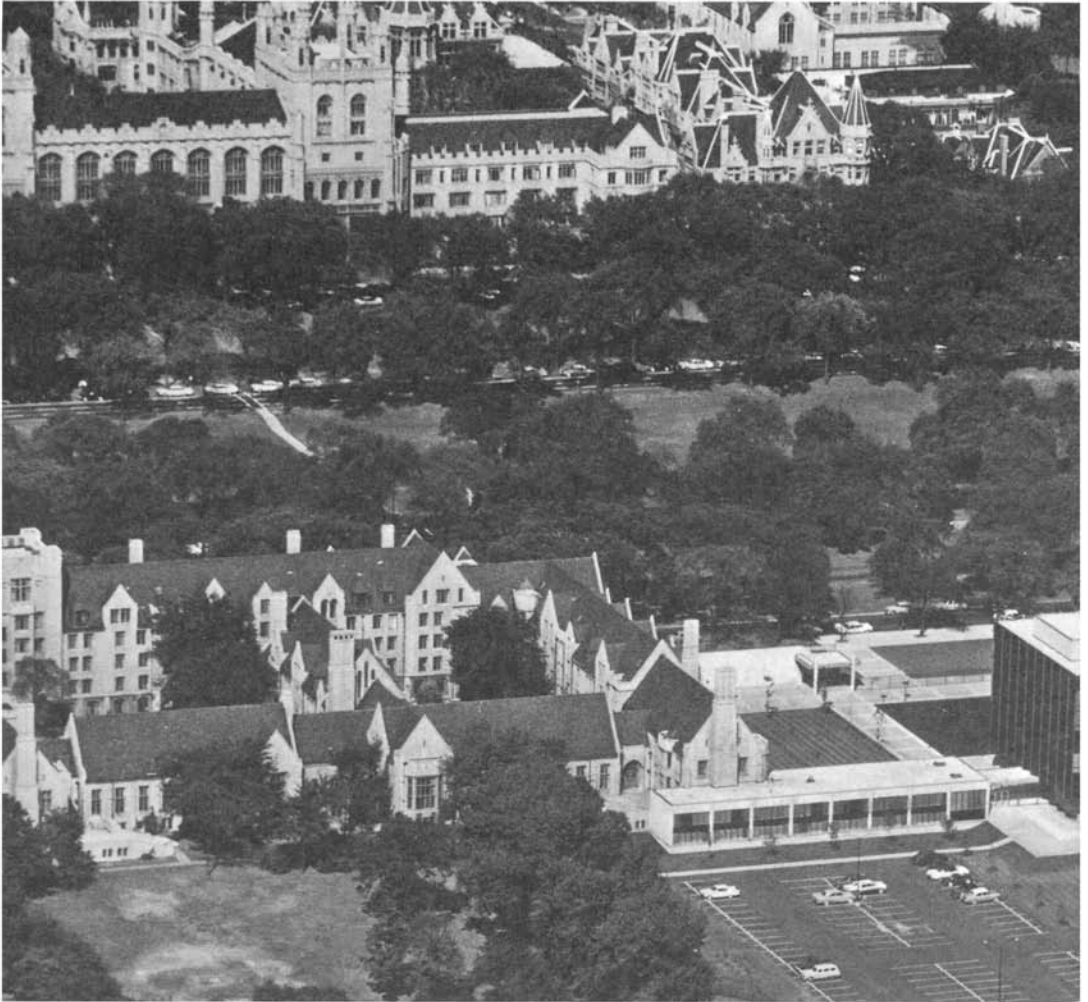
SIDNEY DAVIDSON, A.B., M.B.A., PH.D., C.P.A., *Arthur Young Professor  
of Accounting, Graduate School of Business, and Lecturer in Law.*  
CHARLES M. GRAY, A.B., PH.D., *Professor of English Legal History, De-  
partment of History and the College, and Lecturer in Law.*  
DENNIS J. HUTCHINSON, B.A., M.A., LL.M., *Peter B. Ritzma Associate  
Professor in the College and Lecturer in Law.*

PAUL MEIER, S.B., A.M., PH.D., *Ralph and Mary Otis Isbam Professor, Departments of Statistics and Pharmacological and Physiological Sciences and the College.*

SAM PELTZMAN, B.B.A., PH.D., *Professor of Business Economics, Graduate School of Business.*

MARGARET K. ROSENHEIM, J.D., *Dean and Helen Ross Professor of Social Welfare Policy, School of Social Service Administration, and Lecturer in Law.*

GEORGE J. STIGLER, B.B.A., M.B.A., PH.D., *Charles R. Walgreen Distinguished Service Professor of American Institutions, Department of Economics and Graduate School of Business.*



*The Laird Bell Law Quadrangle, designed by the late Eero Saarinen, is pictured at the bottom center with the main campus of the University (looking north) across the Midway at the top. The American Bar Association headquarters are located to the right of the Law School, and Burton-Judson Courts, containing the two law residence halls, are connected to the Law School on the left. On*

## RESEARCH ASSOCIATES AND VISITING FELLOWS

ALBERT W. ALSCHULER, A.B., LL.B., *Chicago Bar Foundation Fellow, Center for Studies in Criminal Justice.*

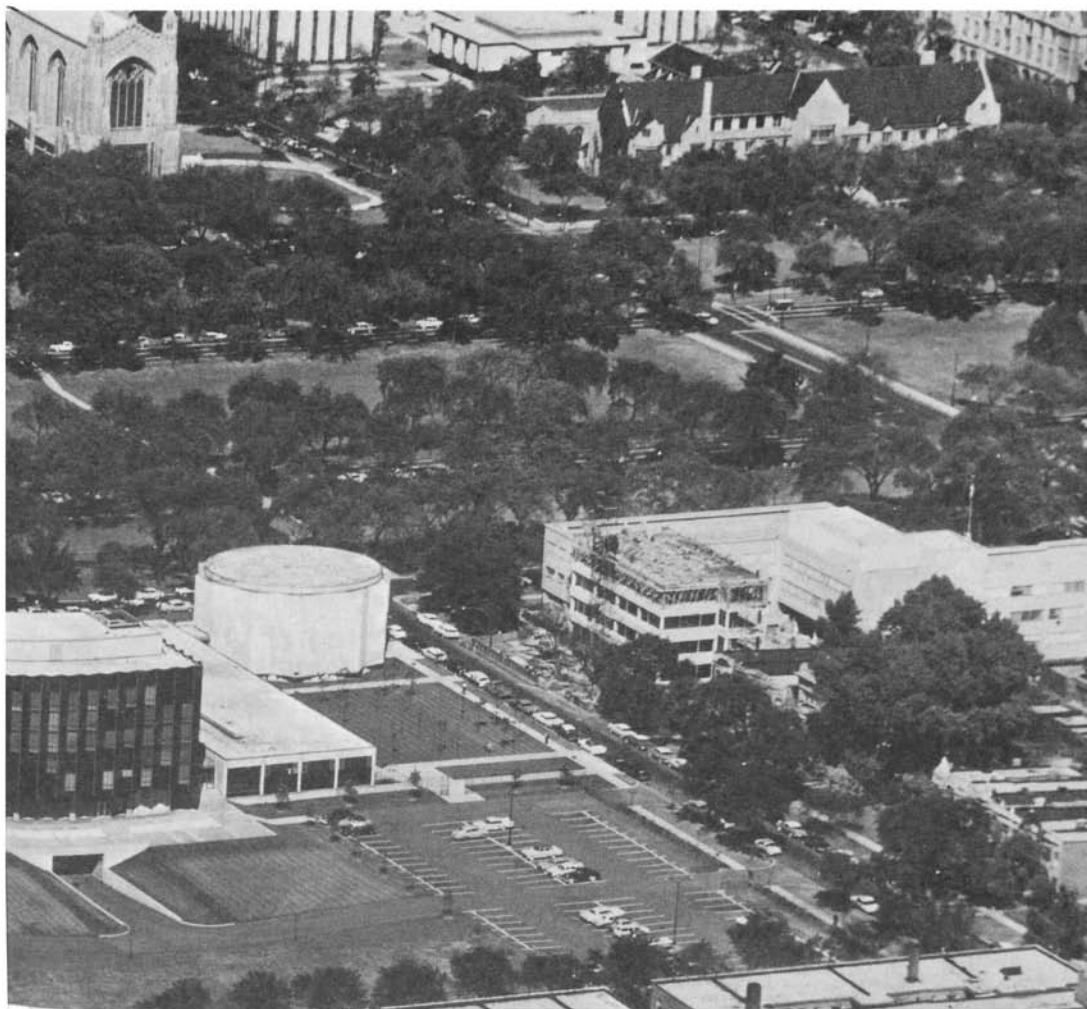
JERRY GOLDMAN, A.B., A.M., PH.D., *Fellow in Law and Economics.*

WAYNE A. KERSTETTER, A.B., J.D., *Research Associate, Center for Studies in Criminal Justice.*

BEN S. MEEKER, A.B., A.M., *Research Associate, Center for Studies in Criminal Justice.*

MARILYN T. MACCRIMMON, B.S., LL.B., *Fellow in Law and Economics.*

ANTHONY I. OGUS, B.A., B.C.L., M.A., *Fellow in Law and Economics.*  
(Spring Quarter.)



*the following two pages is another view of the main Quadrangles of the University (looking northeast) with Lake Michigan in the background. At the top left is a residential area of Hyde Park and at the top right is the Museum of Science and Industry on the lakefront.*